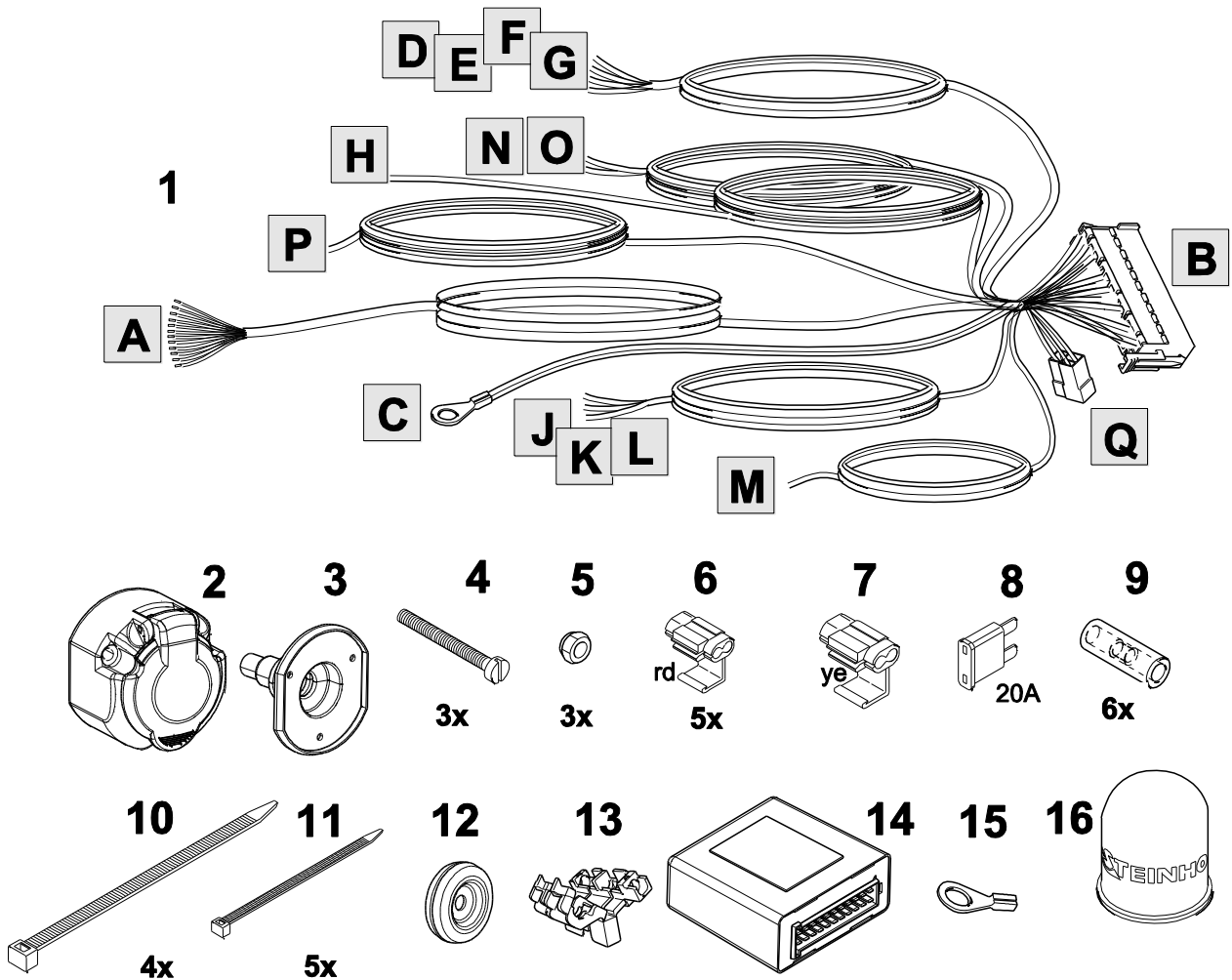


Uniwersalna wiązka z modulem  
do haka holowniczego  
Universal towbar wiring kits with module

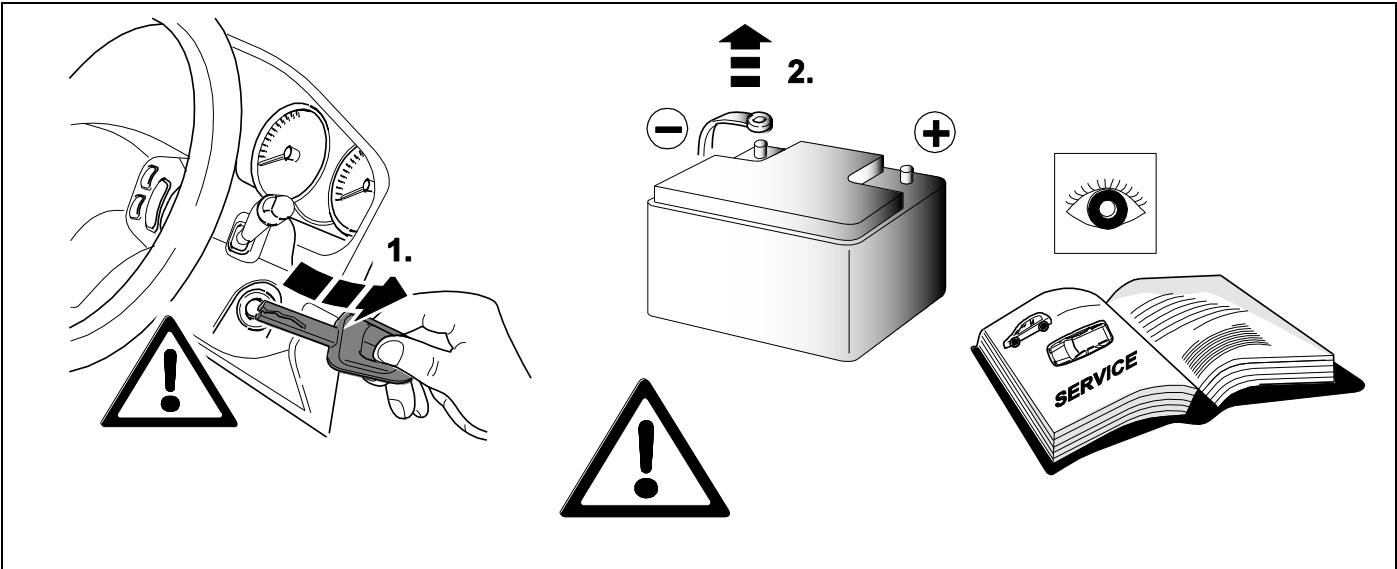
**STEINHOFF** SMP-4PE  
E1 10R-04 7669

Steinhof Sp. z o.o. Sp.K.  
ul.Przemysłowa 27A  
33-100 Tarnów, Poland

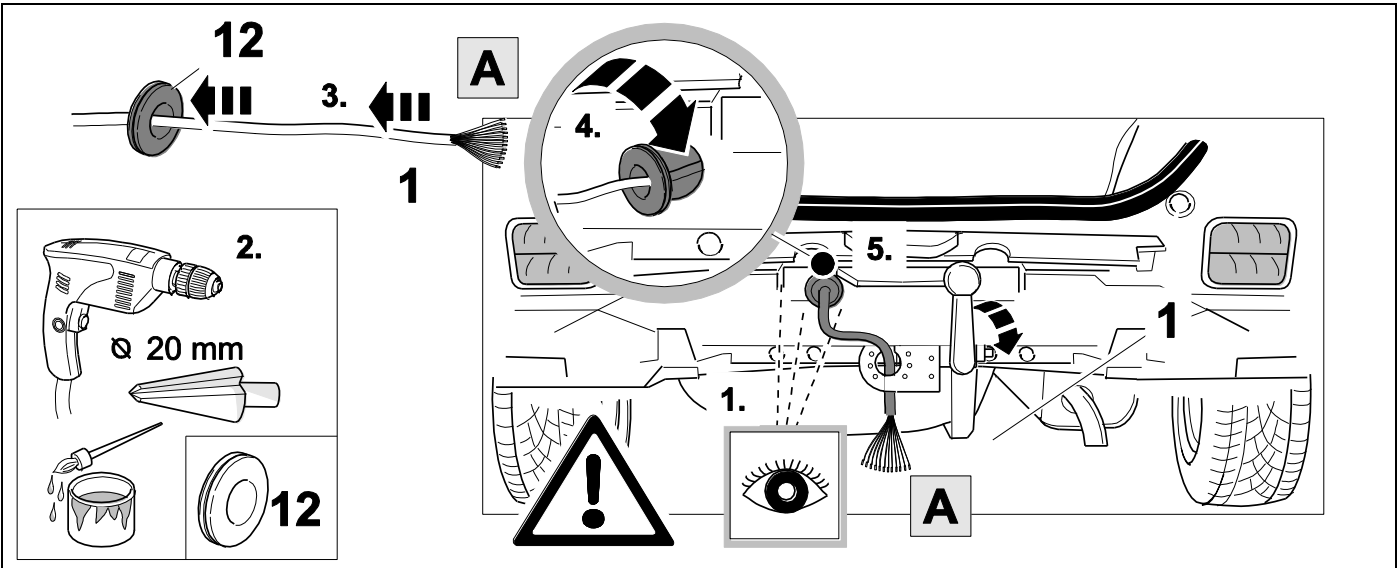
tel. +48 14 627 32 05  
Made in EU  
www.steinhof.pl



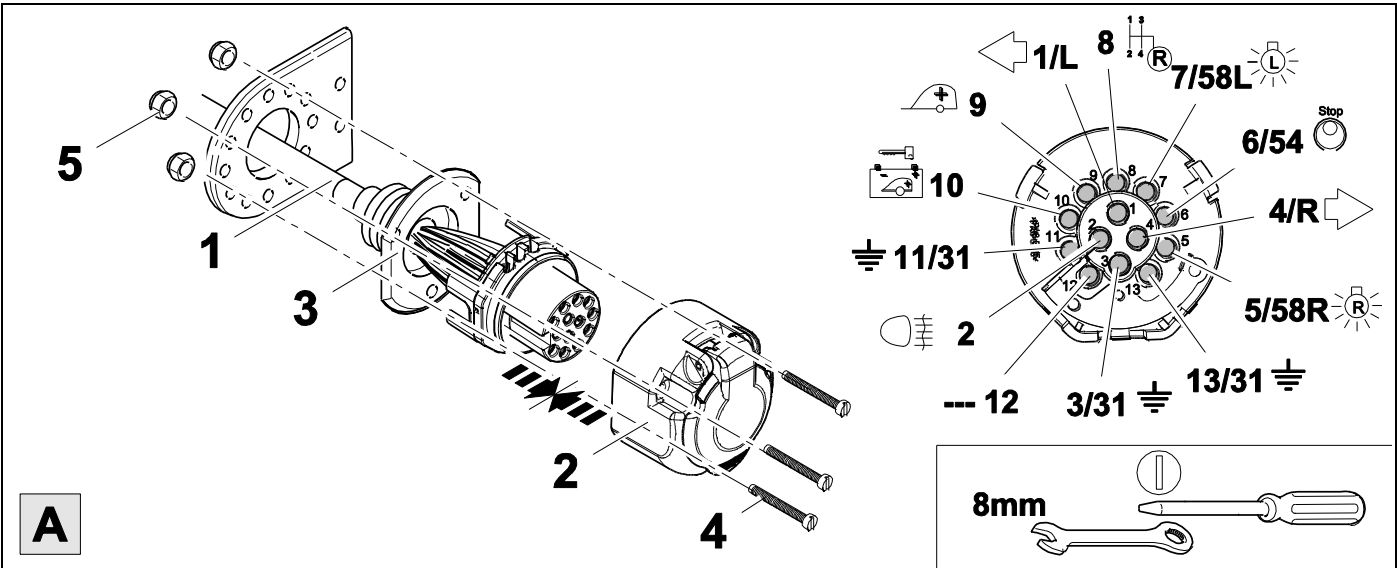
1



2



3



4

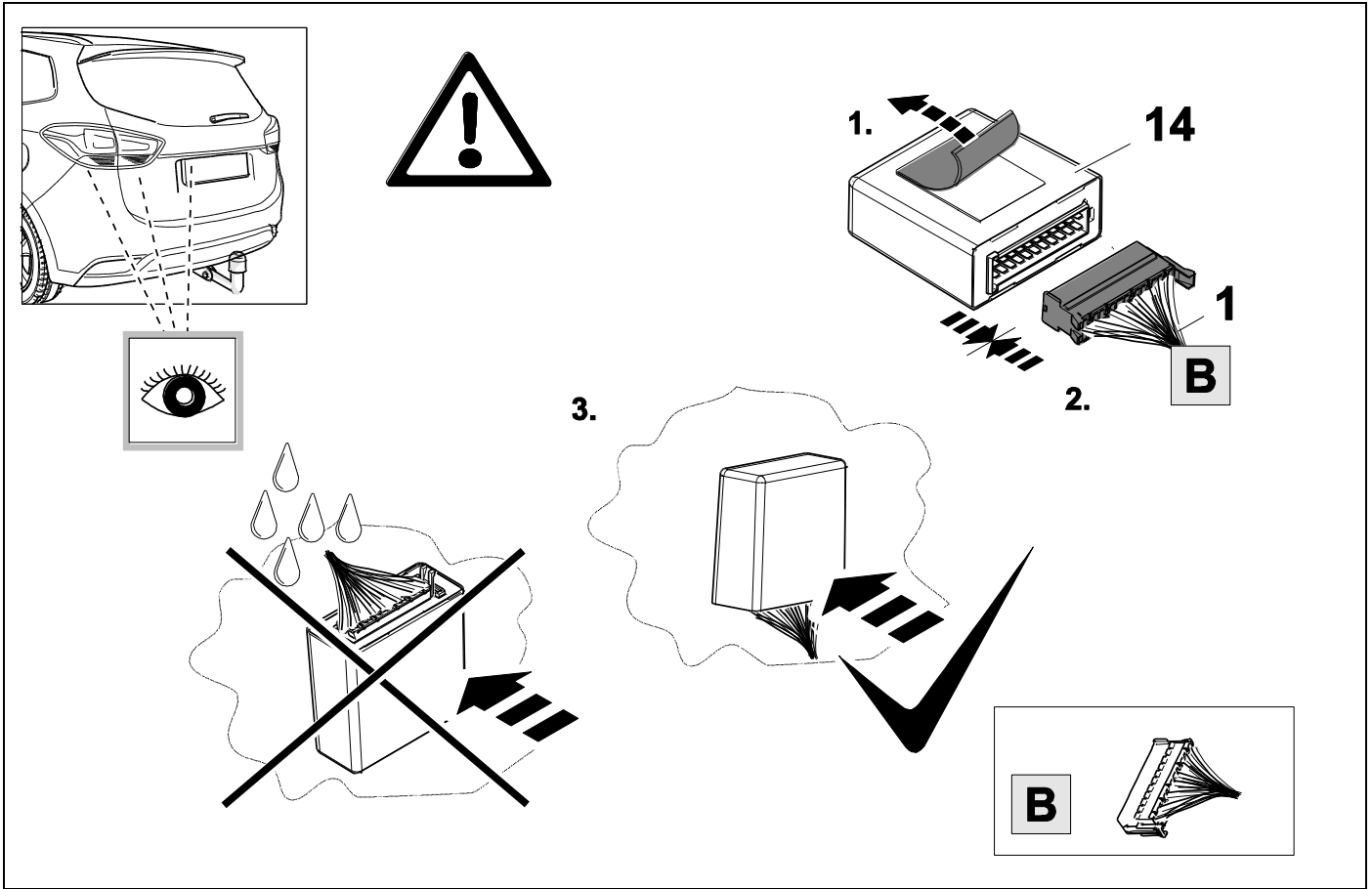


5

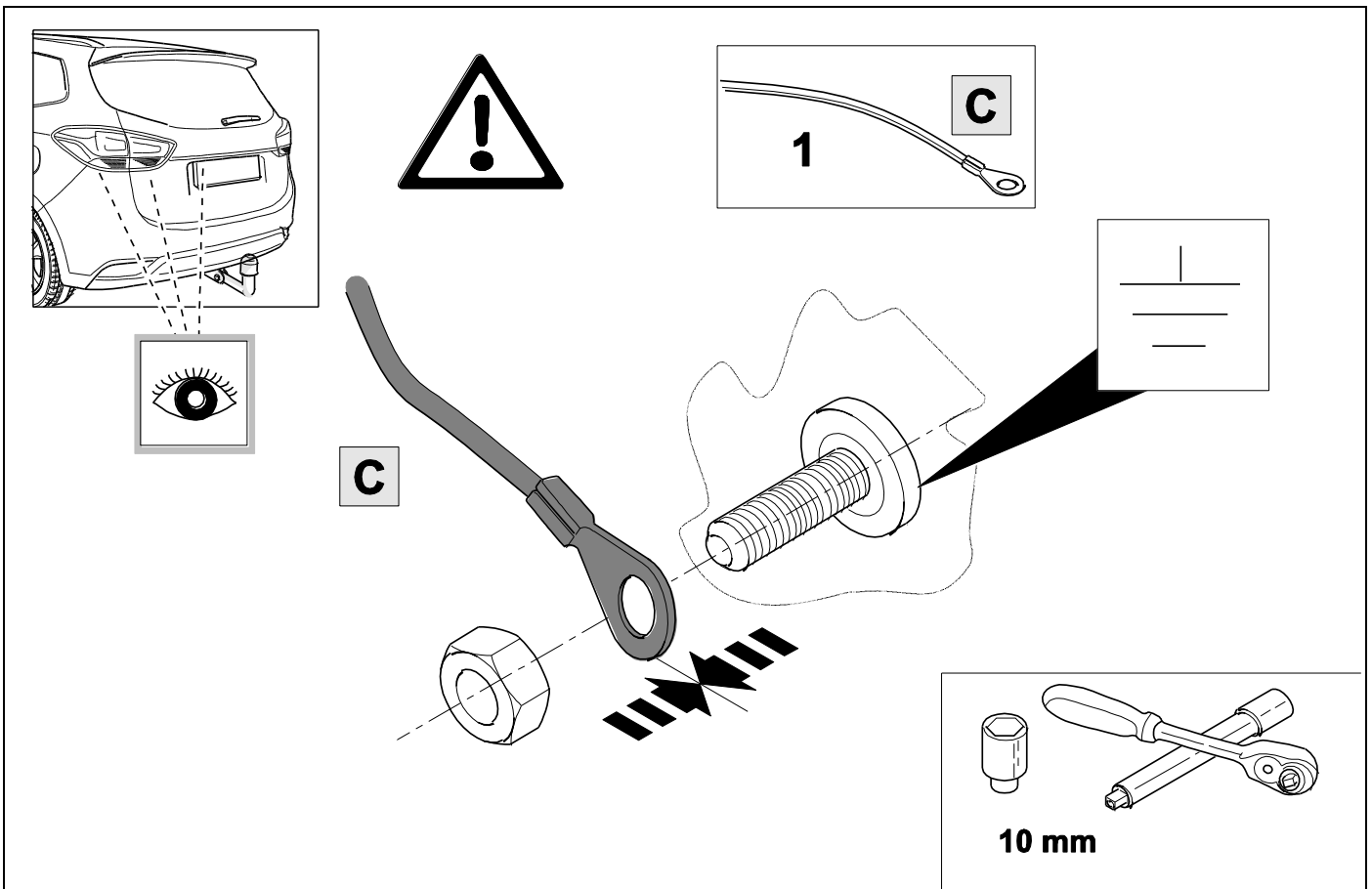
1	ye		7	bk	
2	bu		8	vi	
3	wh		9	or	
4	gn		10	gy	
5	bn		11	wh/bk	
6	rd		13	wh/rd	

5	bk	wh	gy	gn	rd	bu	ye	bn	pu	og
<b>(D)</b>	schwarz	weiß	grau	grün	rot	blau	gelb	braun	violett	orange
<b>(GB)</b>	black	white	grey	green	red	blue	yellow	brown	purple	orange
<b>(F)</b>	noir	blanc	gris	vert	rouge	bleu	jaune	brun	violet	orange
<b>(NL)</b>	zwart	wit	grijs	groen	rood	blauw	geel	bruin	violet	oranje
<b>(DK)</b>	sort	hvid	grå	grøn	rød	blå	gul	brun	violet	orange
<b>(N)</b>	svart	hvit	grå	grønn	rød	blå	gul	brun	fiolett	oransje
<b>(S)</b>	svart	vit	grå	grön	röd	blå	gul	brun	violett	orange
<b>(FIN)</b>	musta	valkoinen	harmaa	vihreä	punainen	sininen	keltainen	ruskea	violetti	oranssi
<b>(I)</b>	nero	bianco	grigio	verde	rosso	blu	giallo	marrone	viola	arancione
<b>(E)</b>	negro	blanco	gris	verde	rojo	azul	amarillo	marrón	violeta	anaranjado
<b>(P)</b>	preto	branco	cinzento	verde	vermelho	azul	amarelo	castanho	violeta	laranja
<b>(GR)</b>	μαύρος	λευκός	Γκρι	πράσινος	κόκκινος	μπλε	κίτρινος	καφέ	Μωβ	πορτοκαλί
<b>(PL)</b>	czarny	biały	szary	zielony	czerwony	niebieski	żółty	brazowy	fioletowy	pomarańczowy
<b>(CZ)</b>	černý	bílý	šedý	zelený	červený	modrý	žlutý	hnědý	fialový	oranžový
<b>(TR)</b>	siyah	beyaz	gri	yeşil	kırmızı	mavi	sarı	kahverengi	mor	portakal rengi
<b>(H)</b>	fekete	fehér	szürke	zöld	piros	kék	sárga	barna	ibolyakék	narancssárga
<b>(HR)</b>	crno	bijelo	sivo	zeleno	crveno	plavo	zuto	smeđe	ljubičasto	narandasto
<b>(BUL)</b>	черен	бял	сив	зелен	червен	син	жълт	кафяв	виолетов	оранжев
<b>(RO)</b>	negru	alb	gri	verde	roșu	albastru	galben	maro	violet	portocaliu
<b>(RU)</b>	черный	белый	серый	зеленый	красный	голубой	жёлтый	коричневый	пурпур-ный	оранжевый
<b>(LT)</b>	juoda	balta	pilka	žalia	raudona	mėlyna	geltona	ruda	purpurinė	oranžinė
<b>(LV)</b>	melna	balta	pelēka	zaļa	sarkana	zila	dzeltena	brūna	purpur-sarkana	oranža
<b>(EST)</b>	must	valge	hall	roheline	punane	sinine	kollane	pruun	purpur-punane	oraanž
<b>(SLO)</b>	črna	bela	siva	zelena	rdeča	modra	rumena	smeđ	vijoličast	oranžen
<b>(SK)</b>	čierny	biely	šedý	zelený	červený	modrý	žltý	hnedý	fialový	pomarančový

6



7



**8 WITHOUT TRAILER FLASHER CONTROL OPTION 1A**

1  
2  
3

1 2 3/C

~~D A GB~~

BUL CH CZ DK E EST F FIN  
H HR I LT LV N NL GR  
RO RU S SK SLO TR P PL

**9**



**5**

**OPTION 1A**

L R

1.

2.

3.

4.

6

E bk-wh

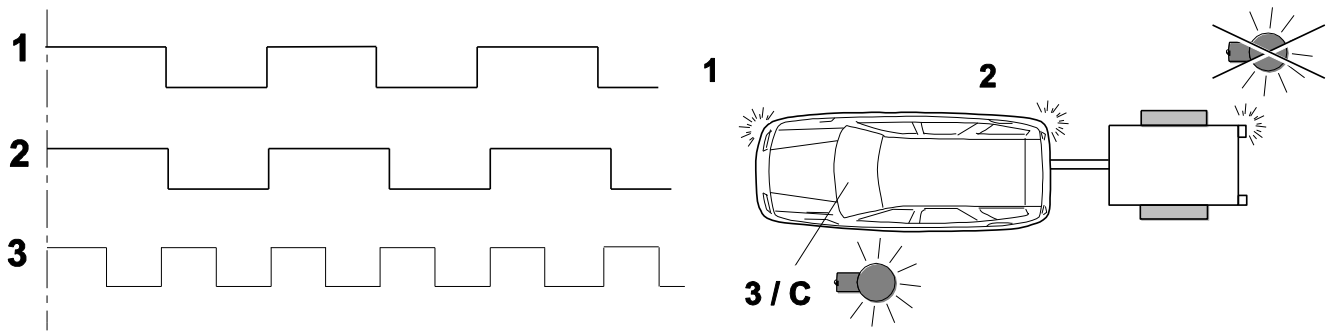
J gn-wh


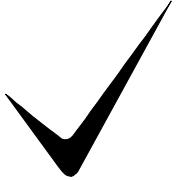
D ye-wh

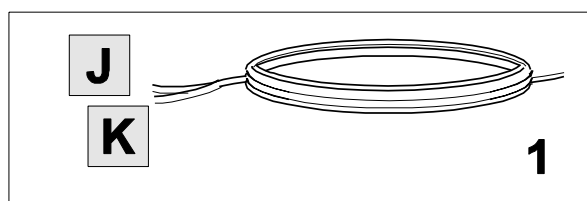
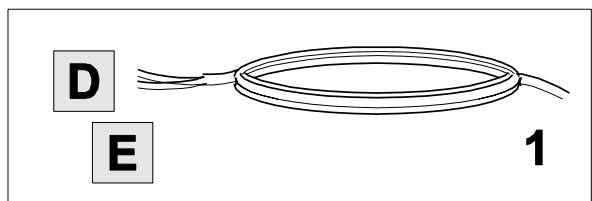
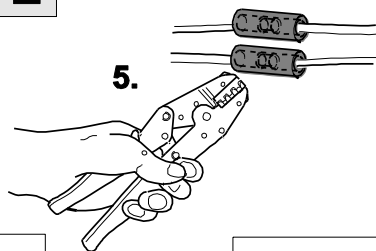
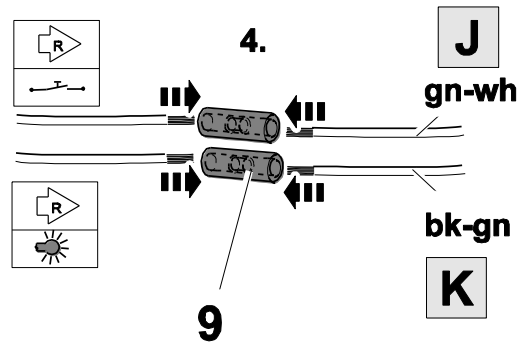
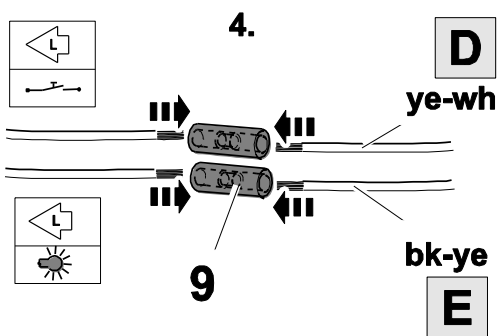
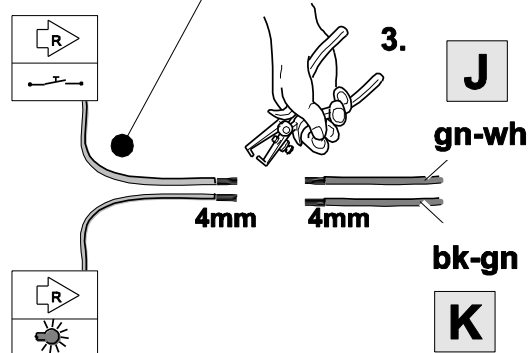
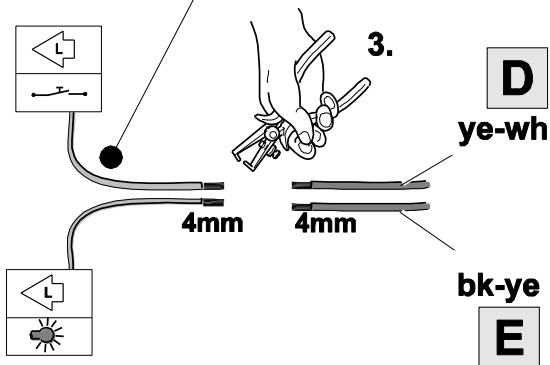
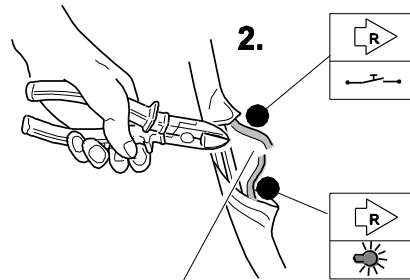
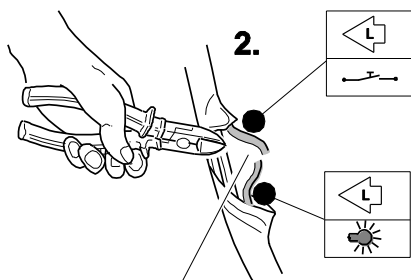
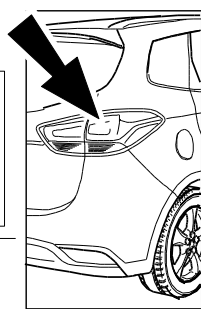
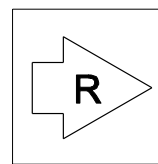
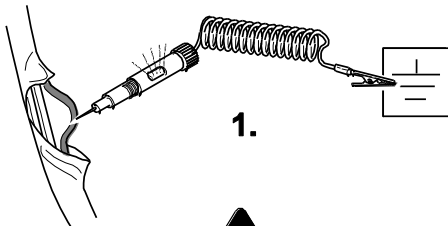
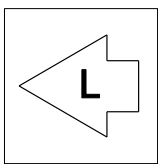
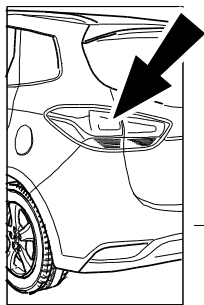
K bk-gn

1

1



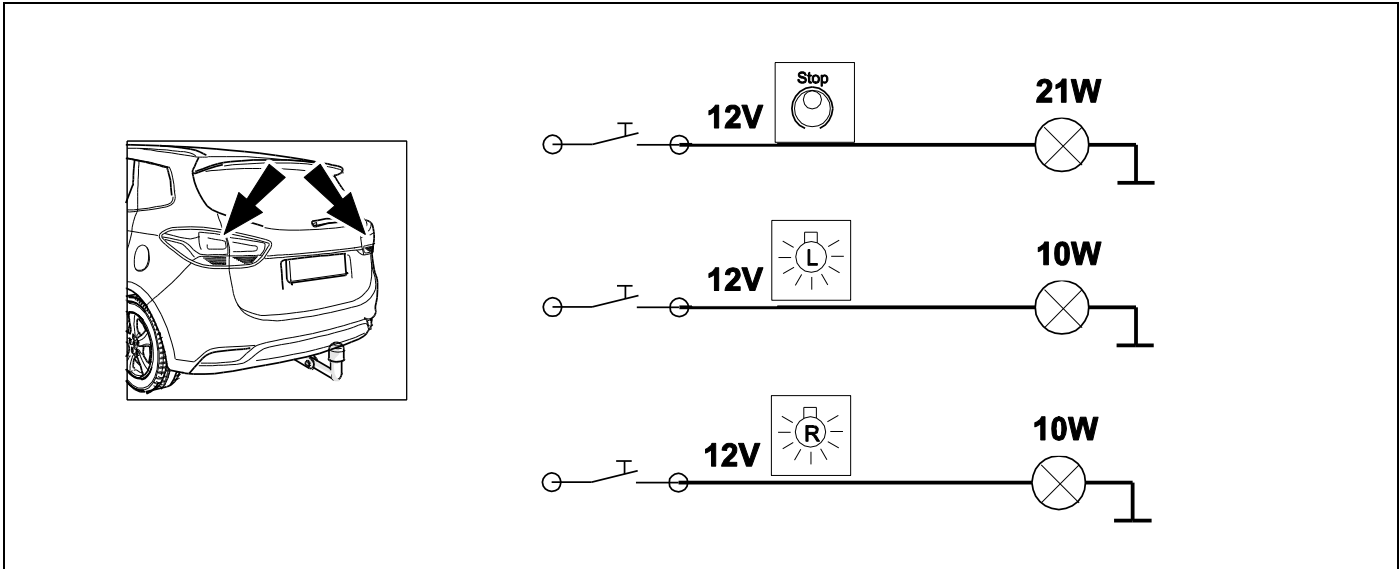
- (D)** **(A)** **(GB)**  
- (BUL)** **(CH)** **(CZ)** **(DK)** **(E)** **(EST)** **(F)** **(FIN)**
- (H)** **(HR)** **(I)** **(LT)** **(LV)** **(N)** **(NL)** **(GR)**
- (RO)** **(RU)** **(S)** **(SK)** **(SLO)** **(TR)** **(P)** **(PL)**



12

WITHOUT MULTIPLEX - SYSTEM / PWM

OPTION 2A

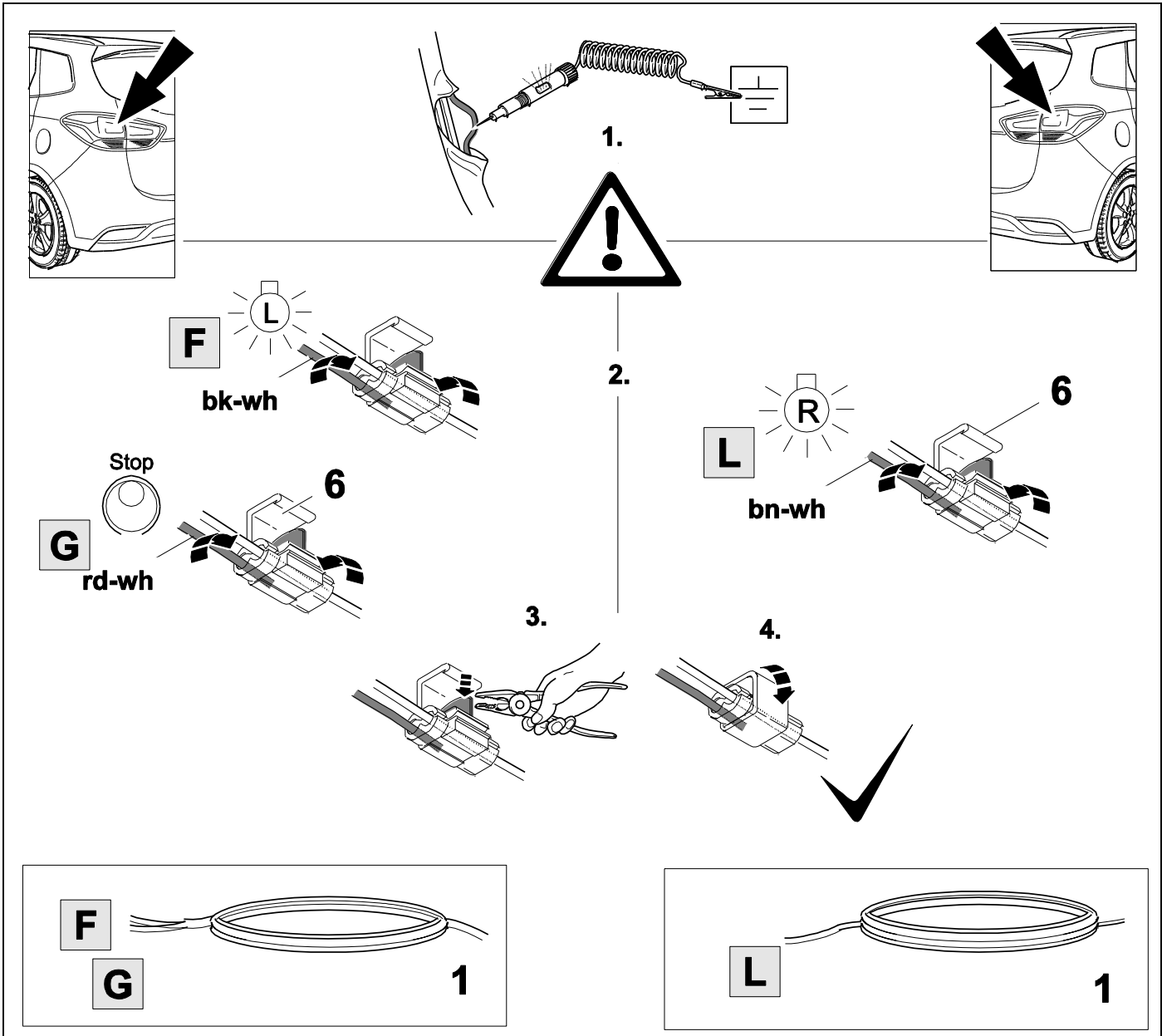


13



5

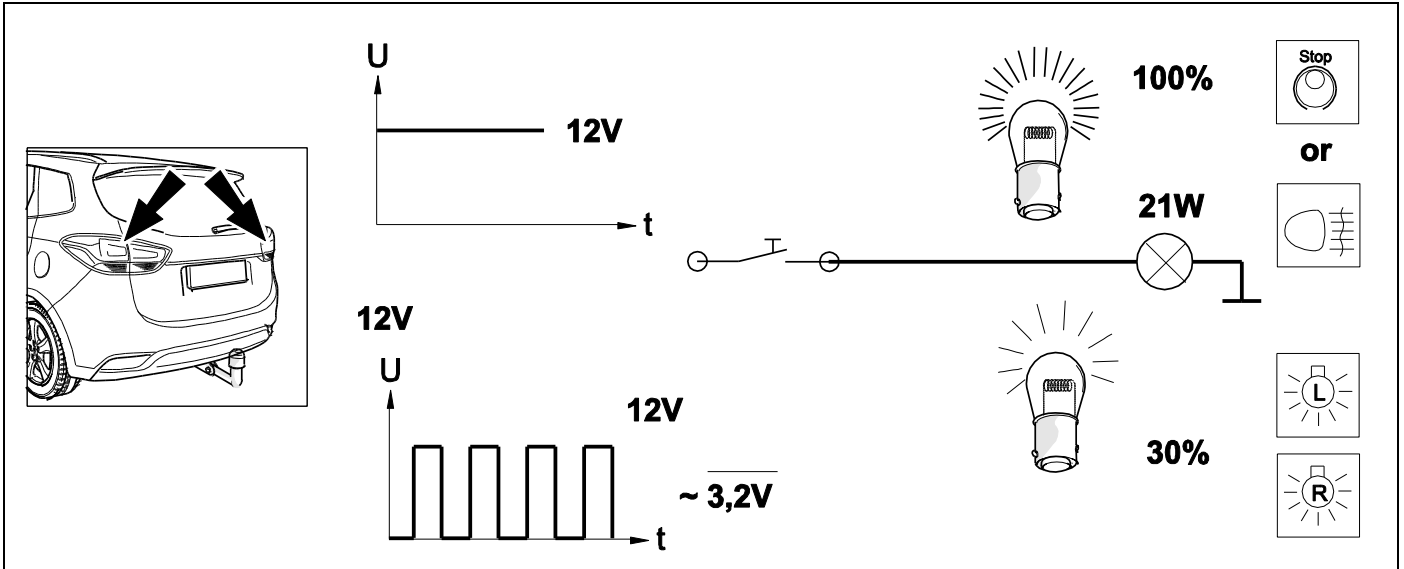
OPTION 2A





**14 WITH MULTIPLEX - SYSTEM / PWM**

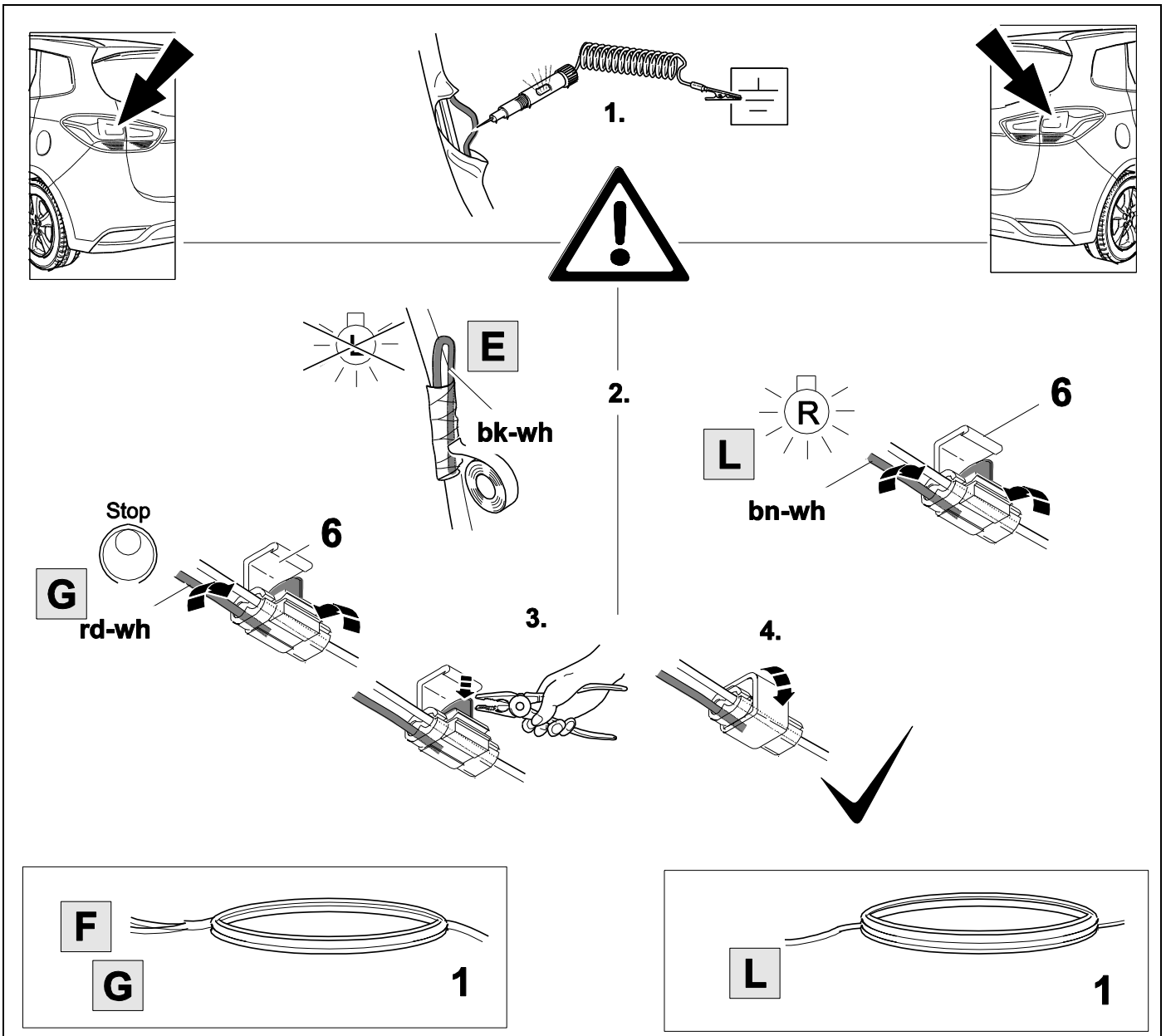
**OPTION 2B**



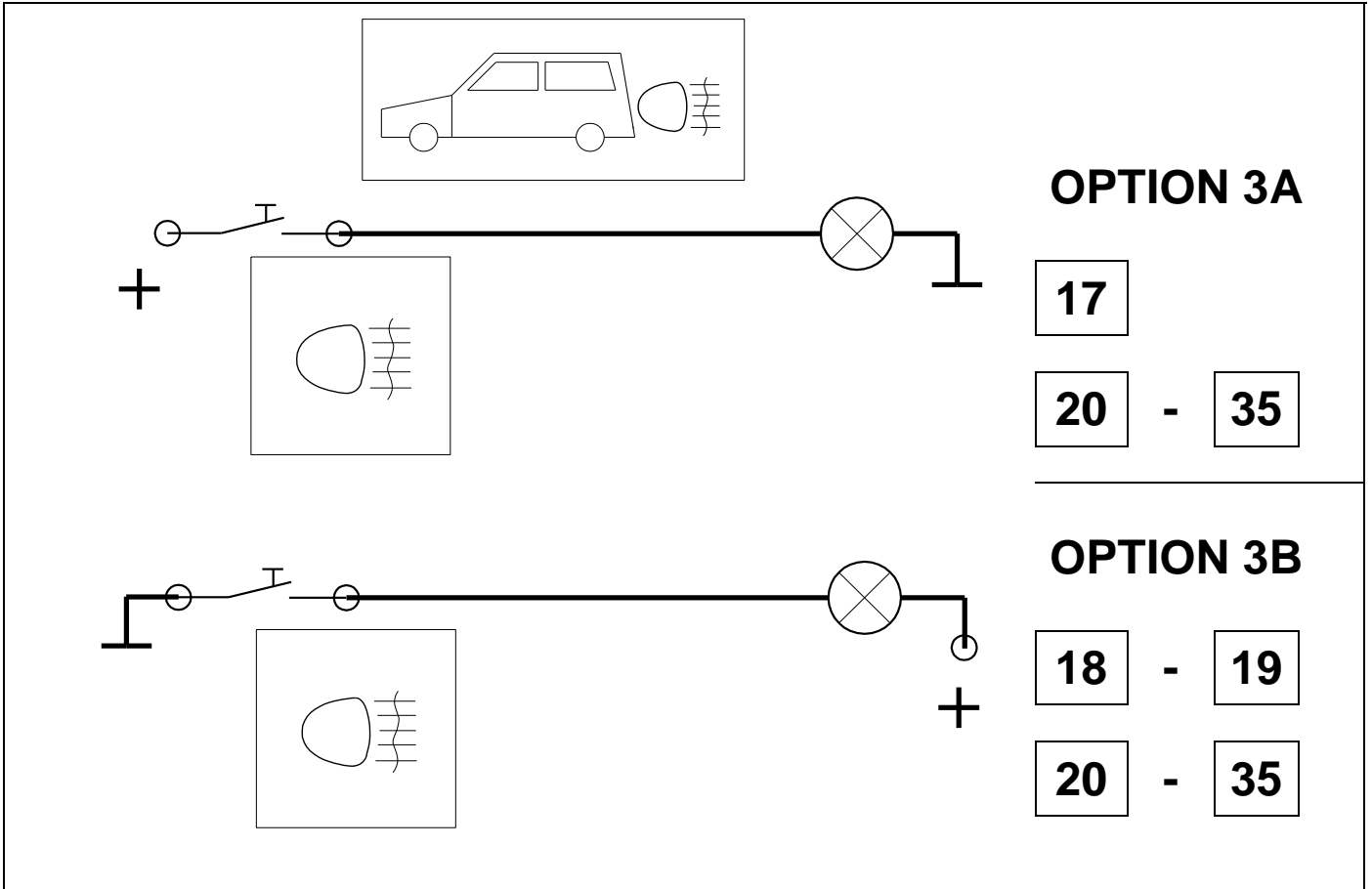
**15**



**OPTION 2B**



# 16 POLARITY FOG LAMP (POSITIVE OR NEGATIV SWITCHED)



OPTION 3A

17

20 - 35

OPTION 3B

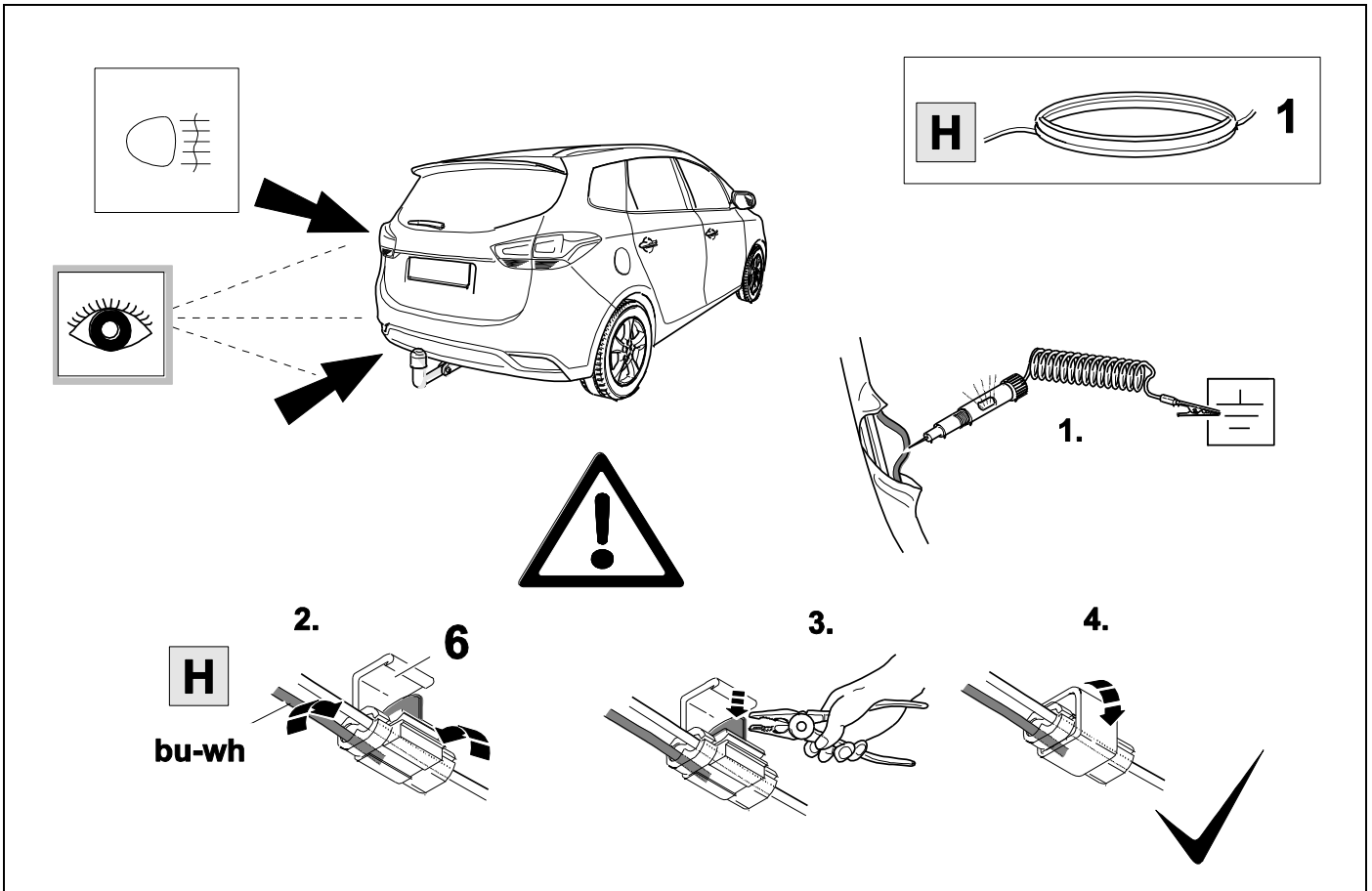
18 - 19

20 - 35

# 17 POSITIVE SWITCHED



OPTION 3A



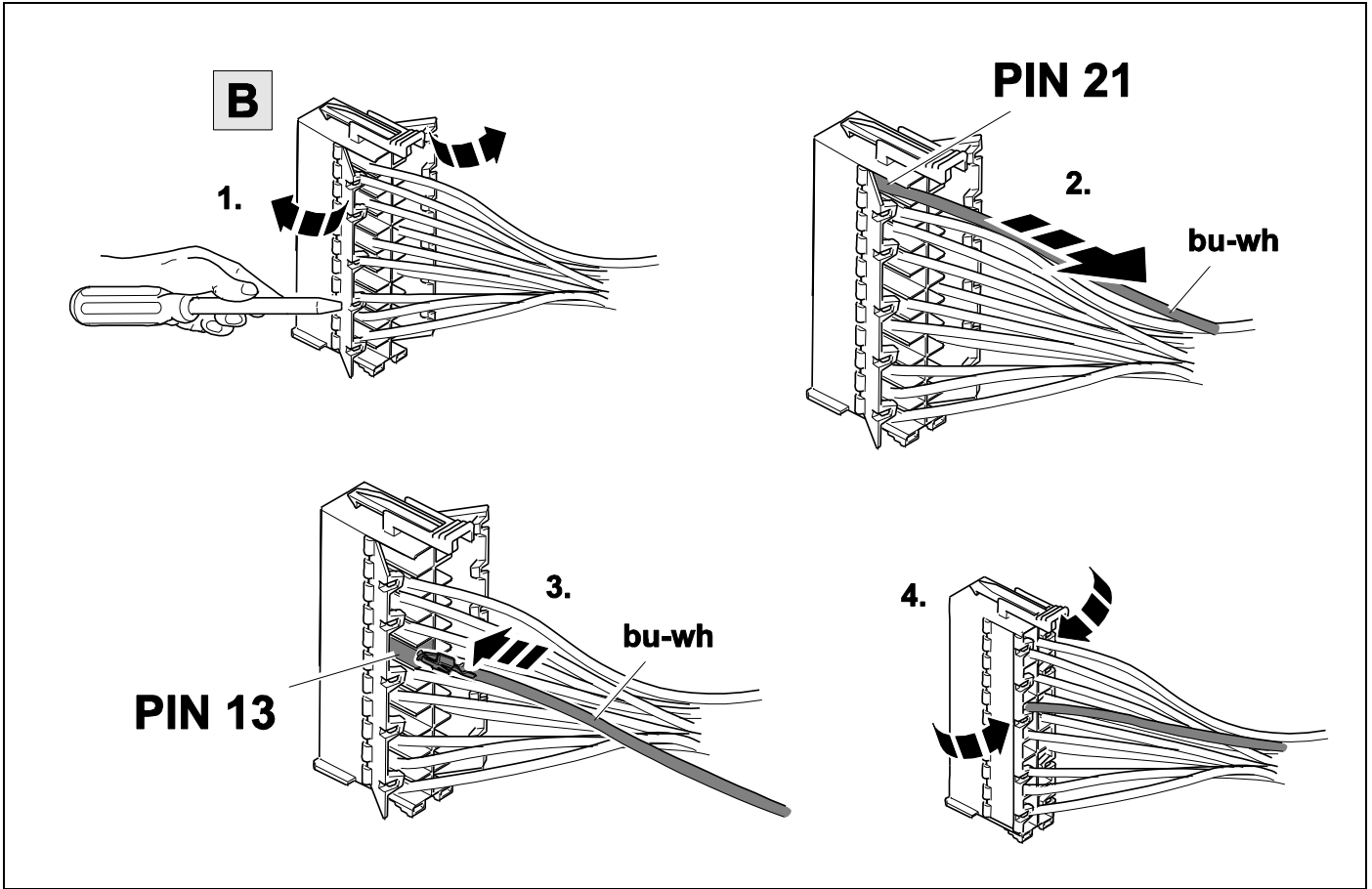
18

POSITIVE SWITCHED



5

OPTION 3B



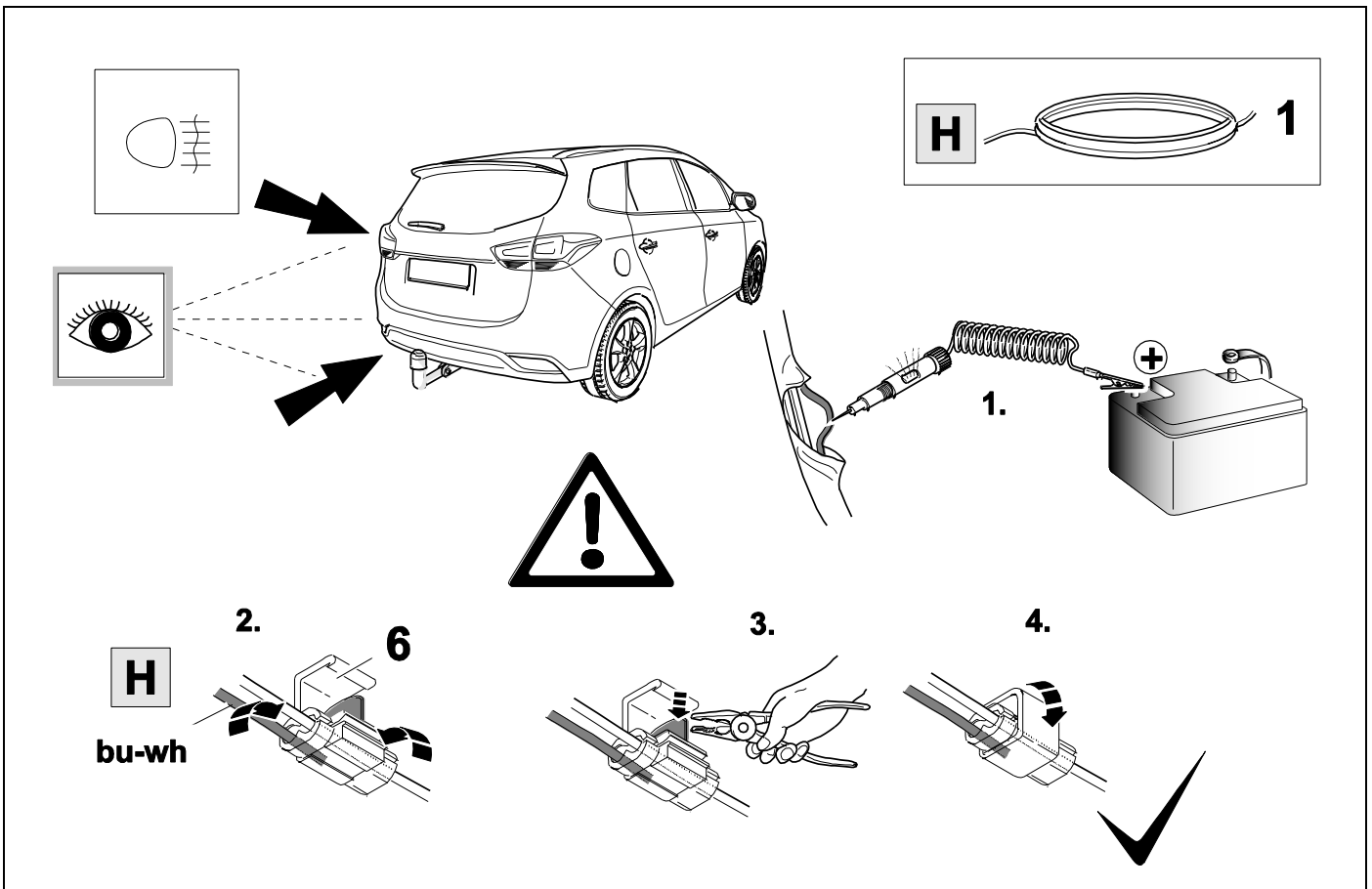
19

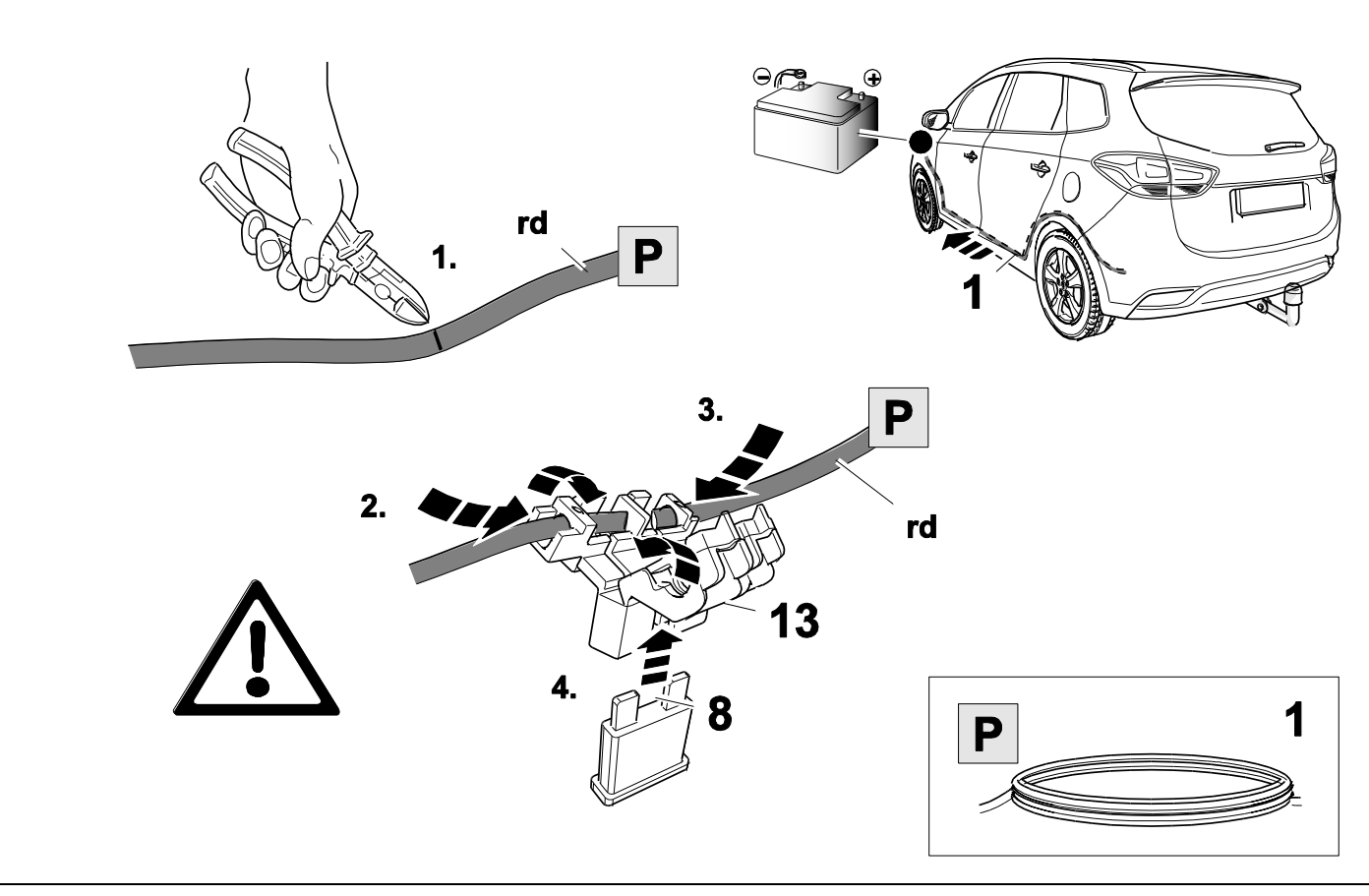
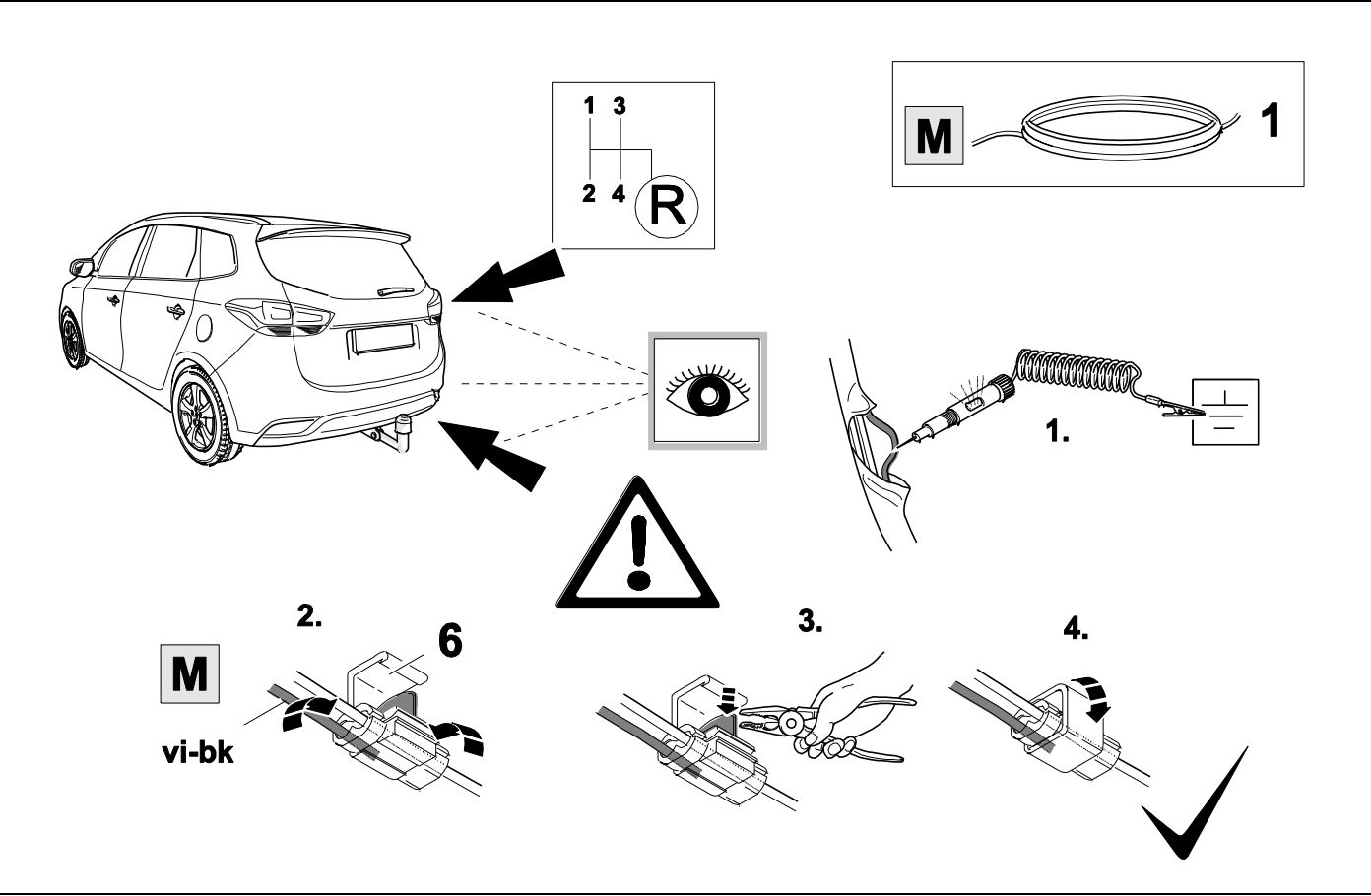
NEGATIVE SWITCHED



5

OPTION 3B





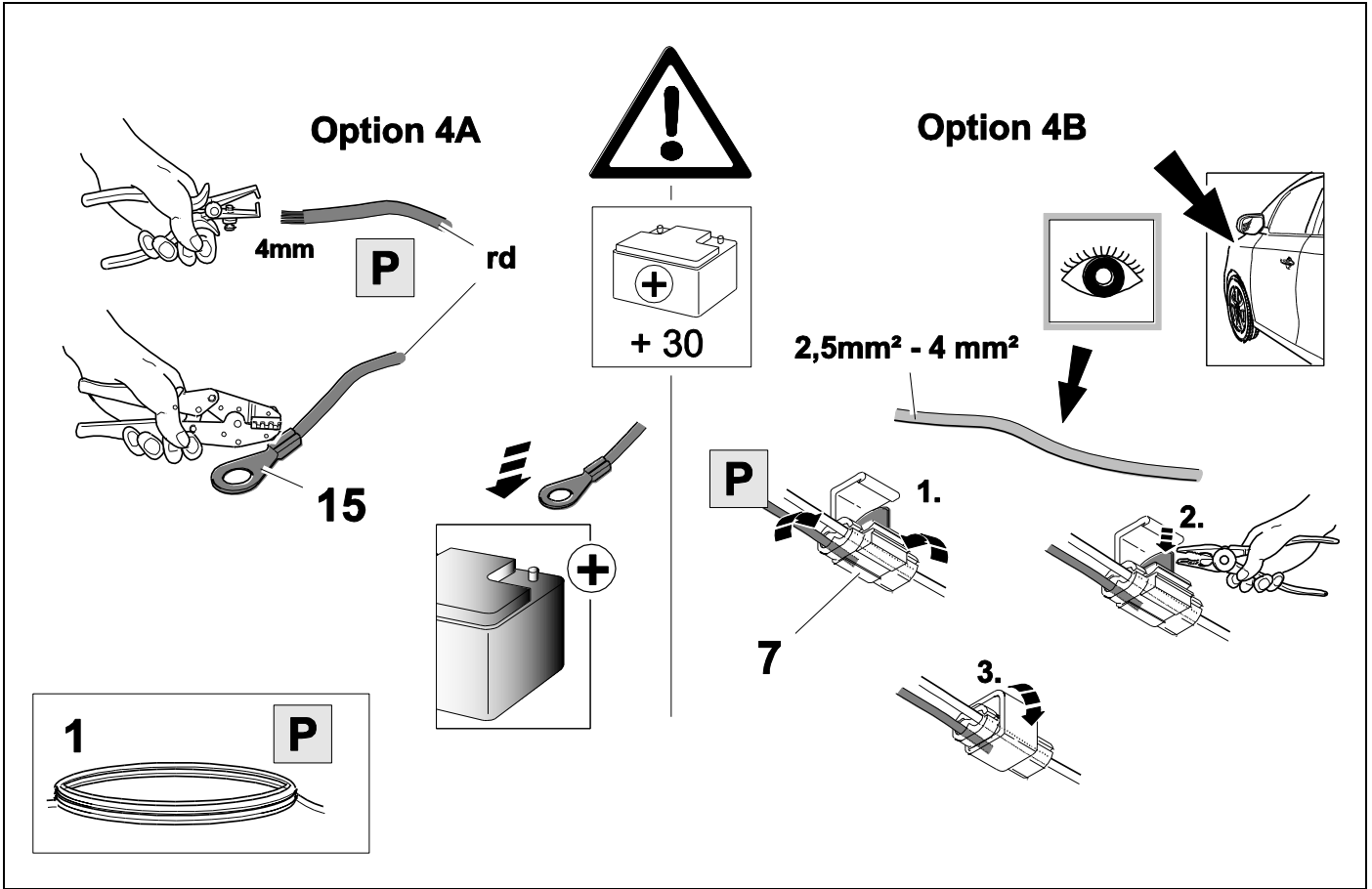
22

OPTION 4A



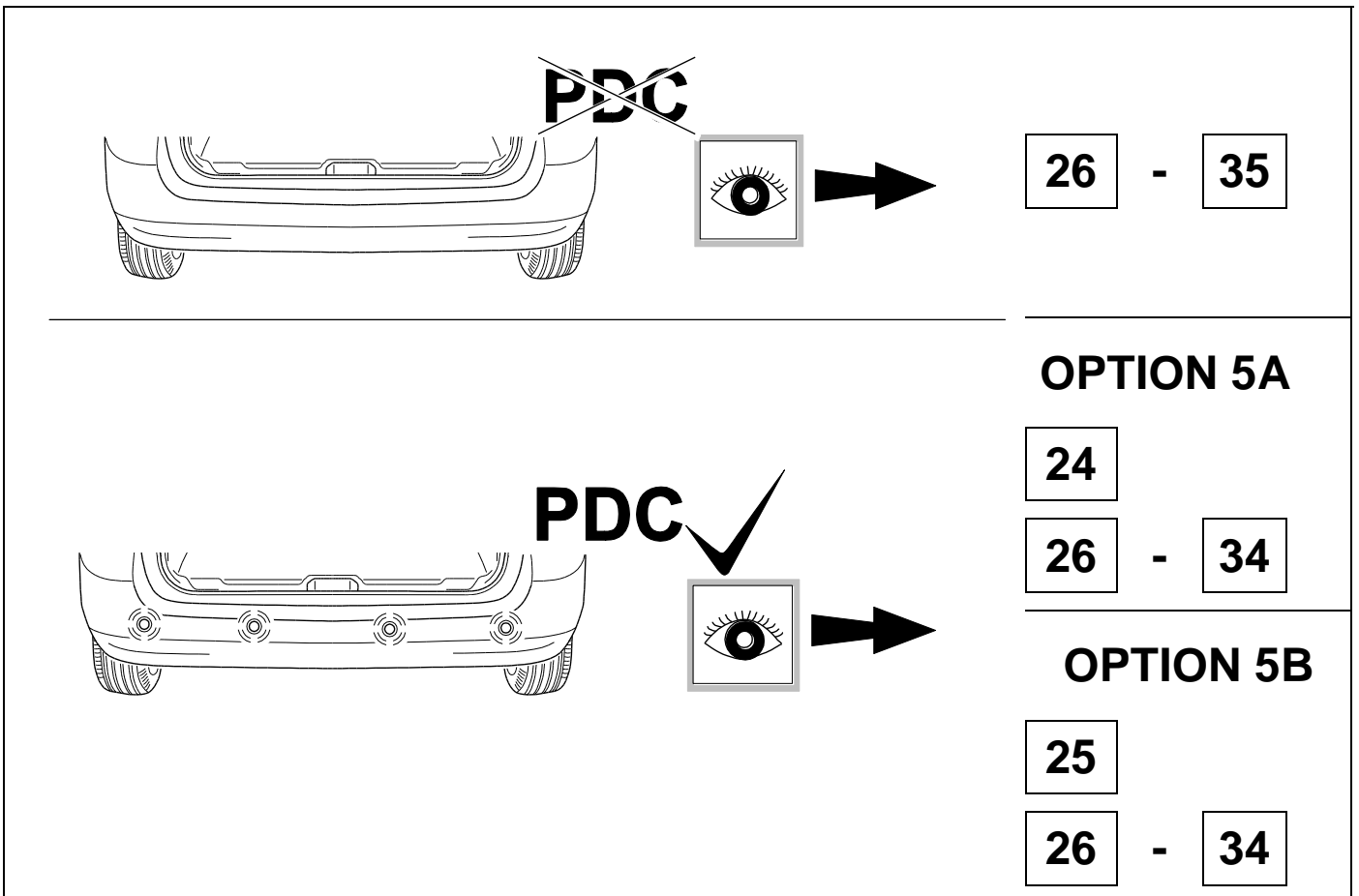
5

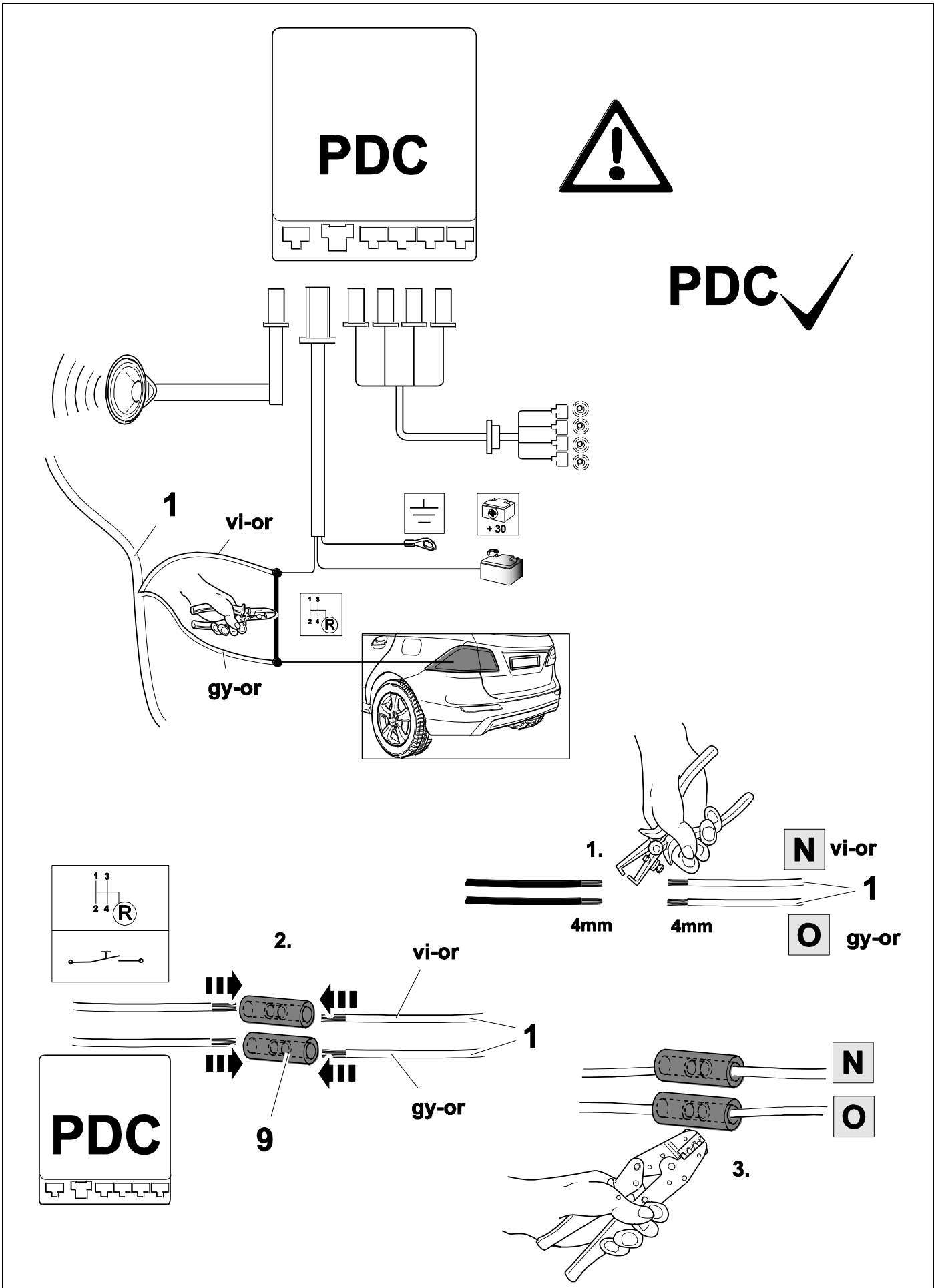
OPTION 4B

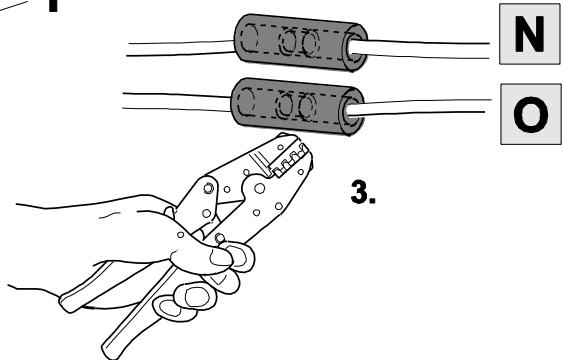
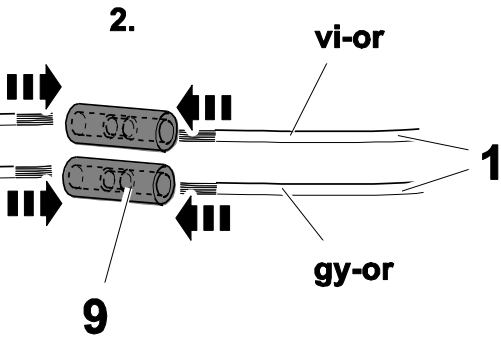
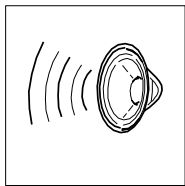
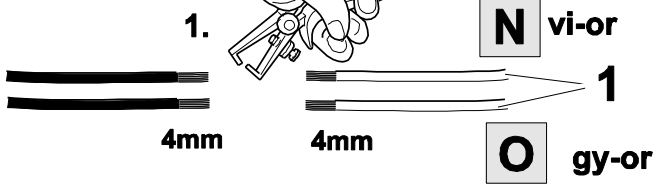
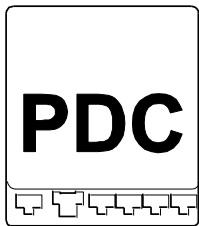
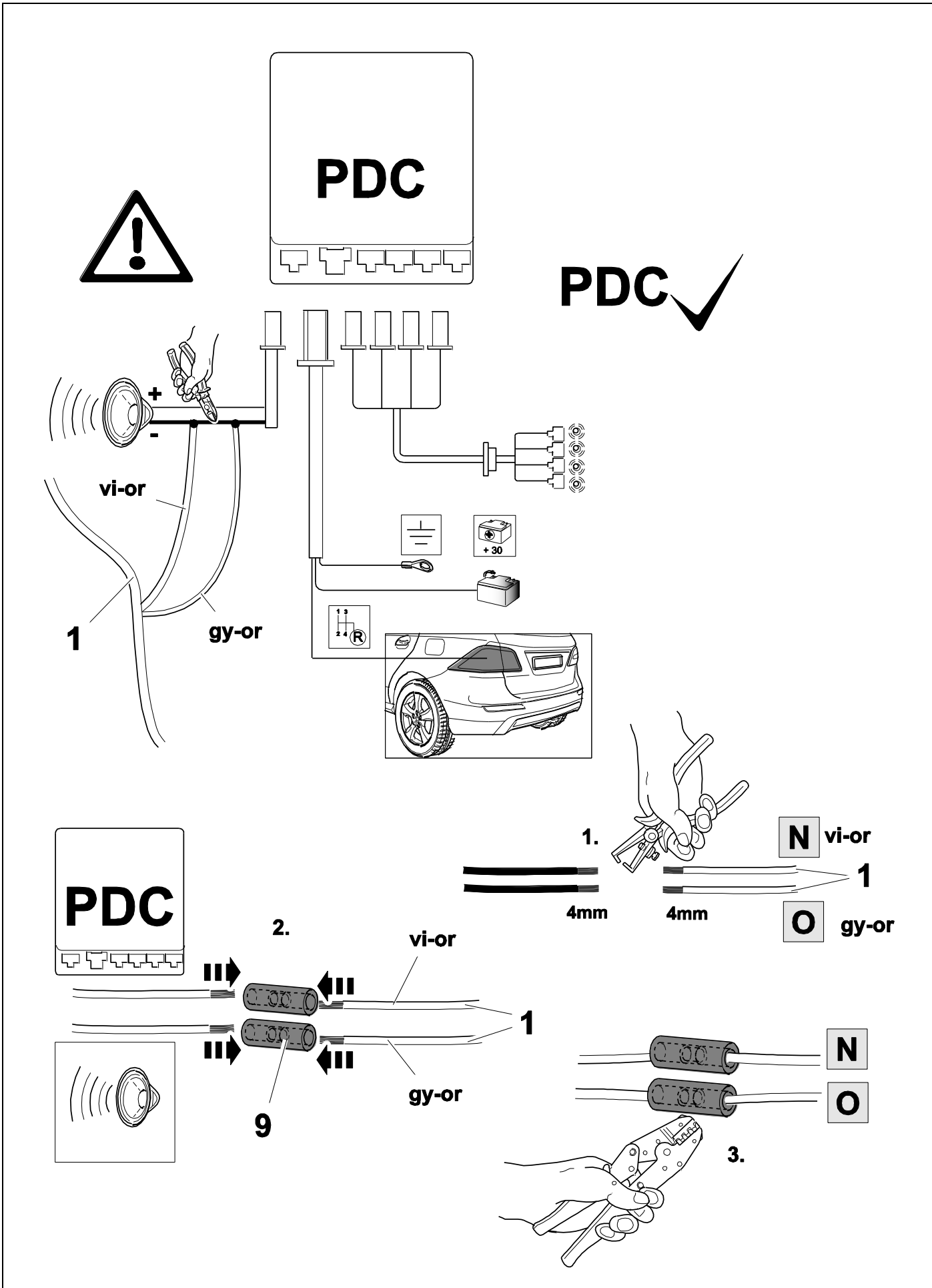


23

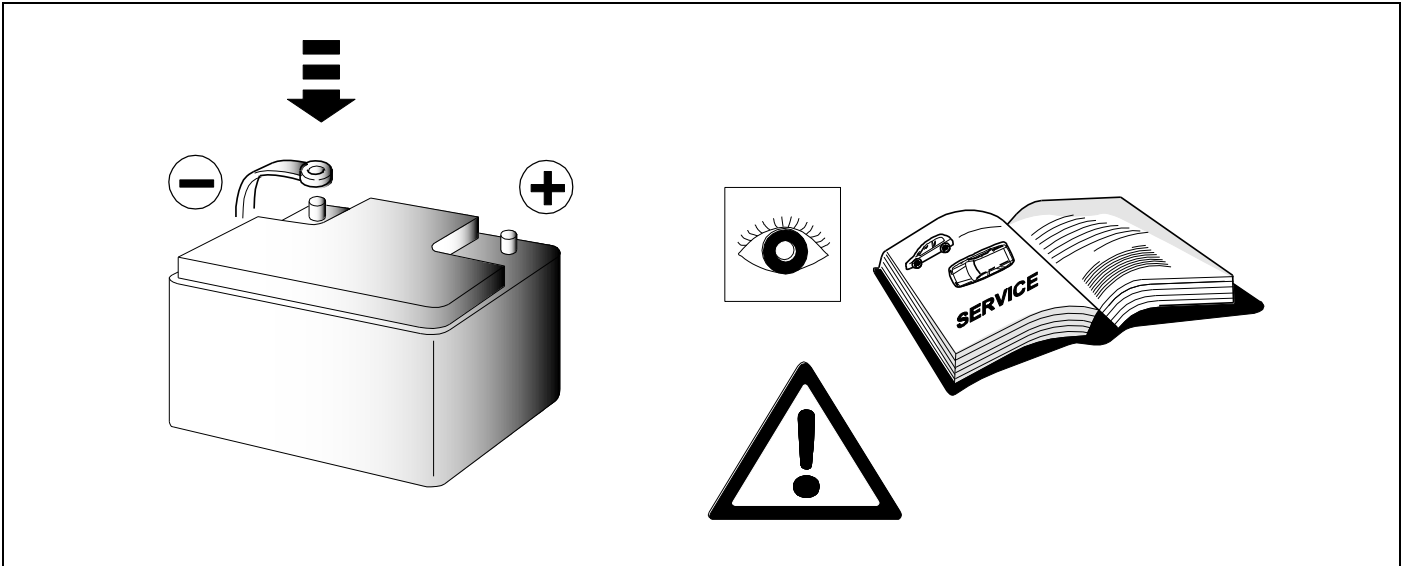
PARK DISTANCE CONTROL DEACTIVATION







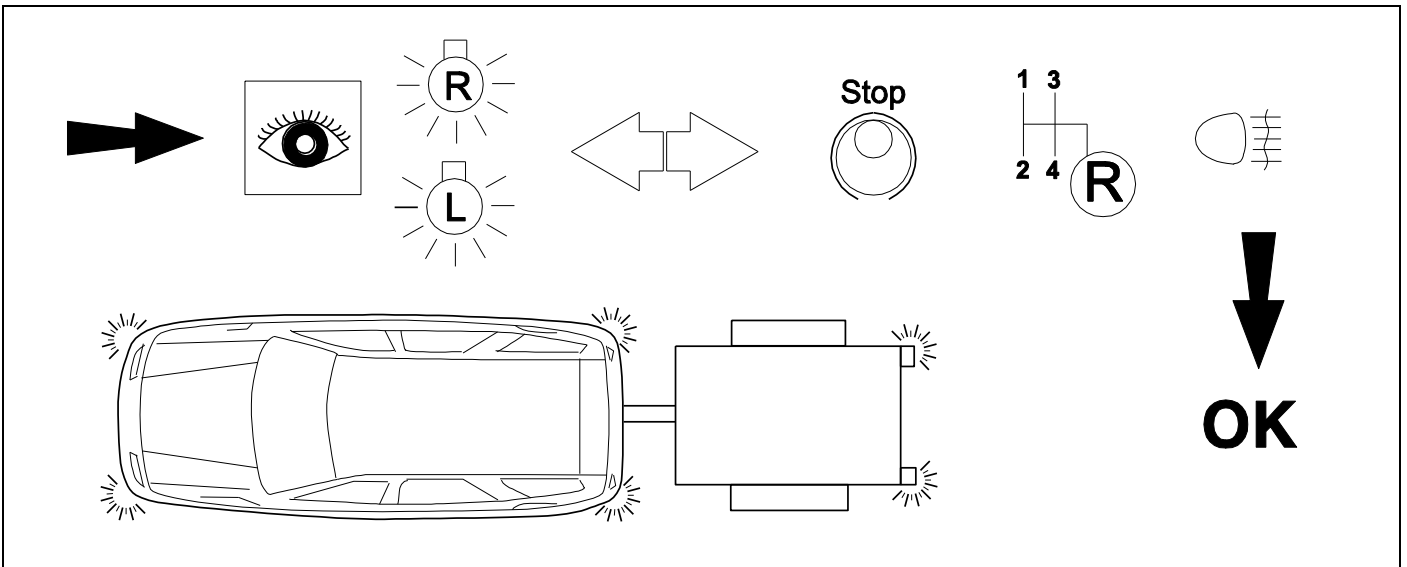
26



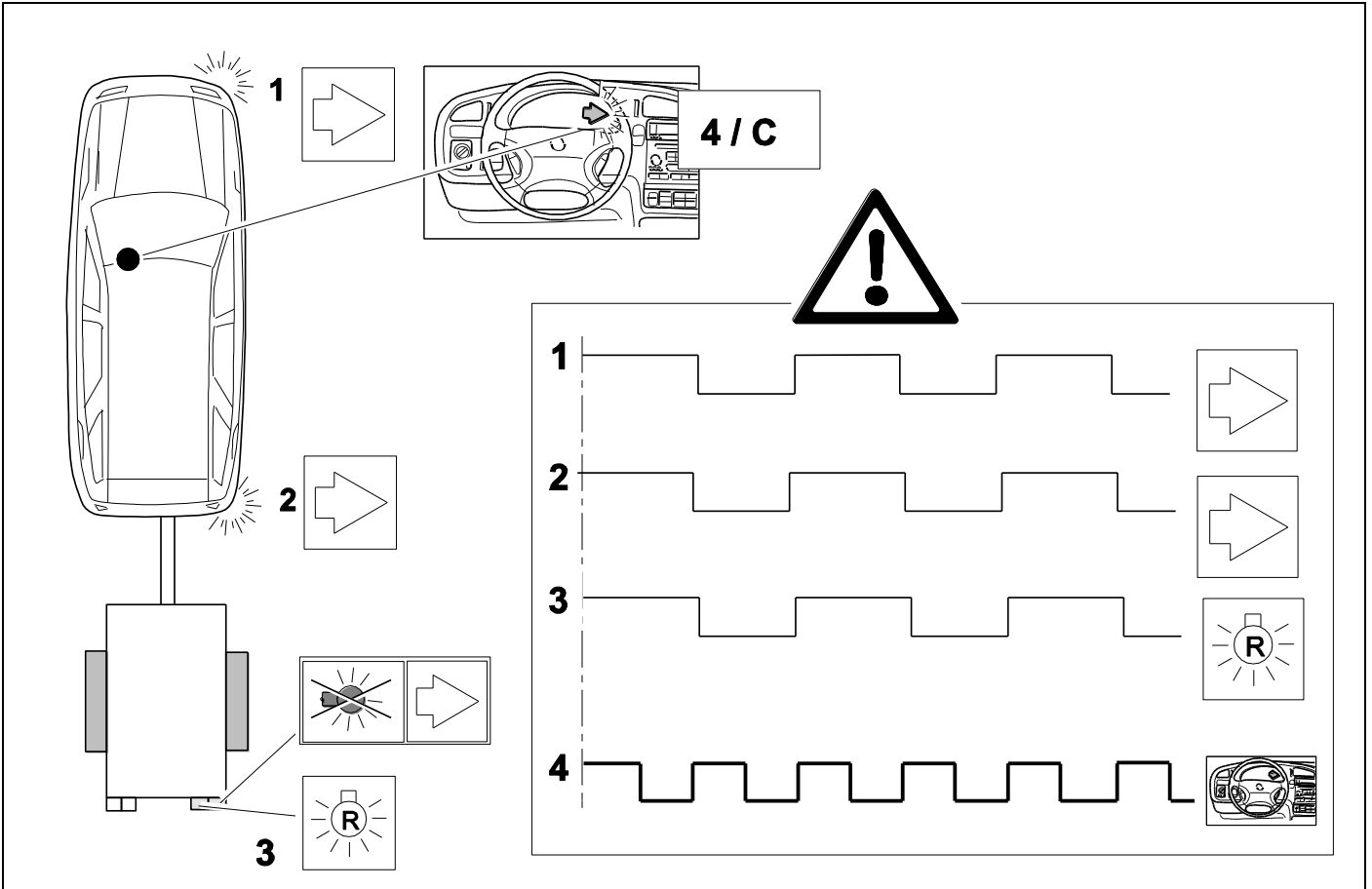
### 27 OPTIONAL EXTENSION

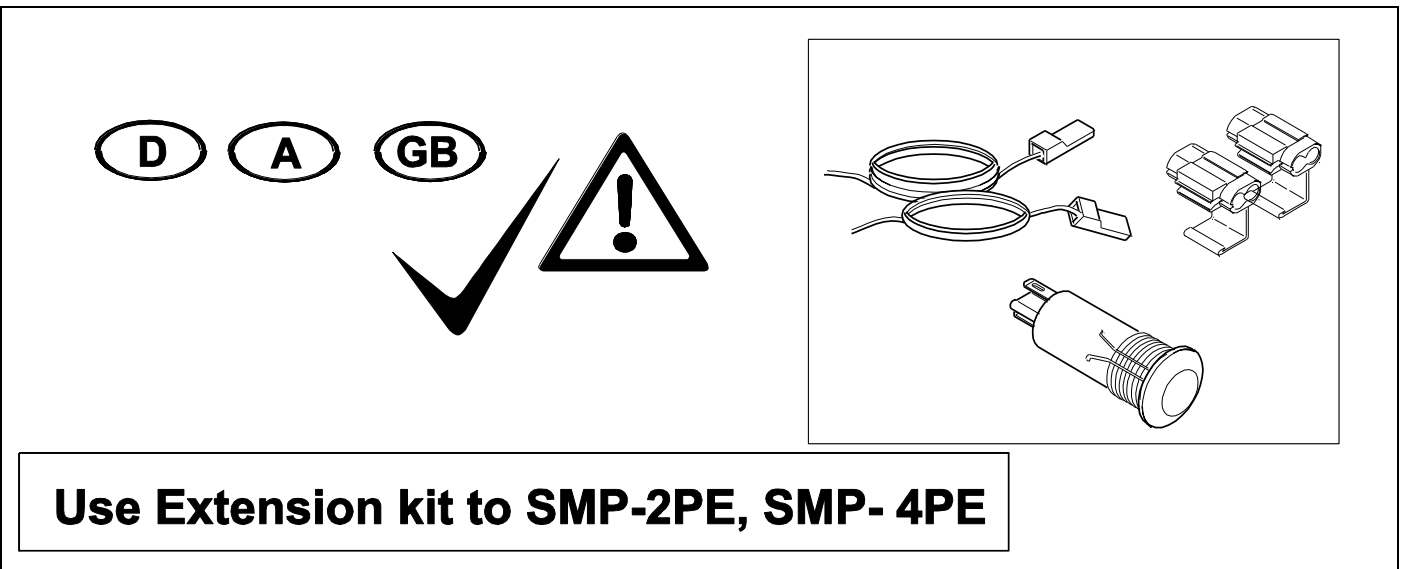
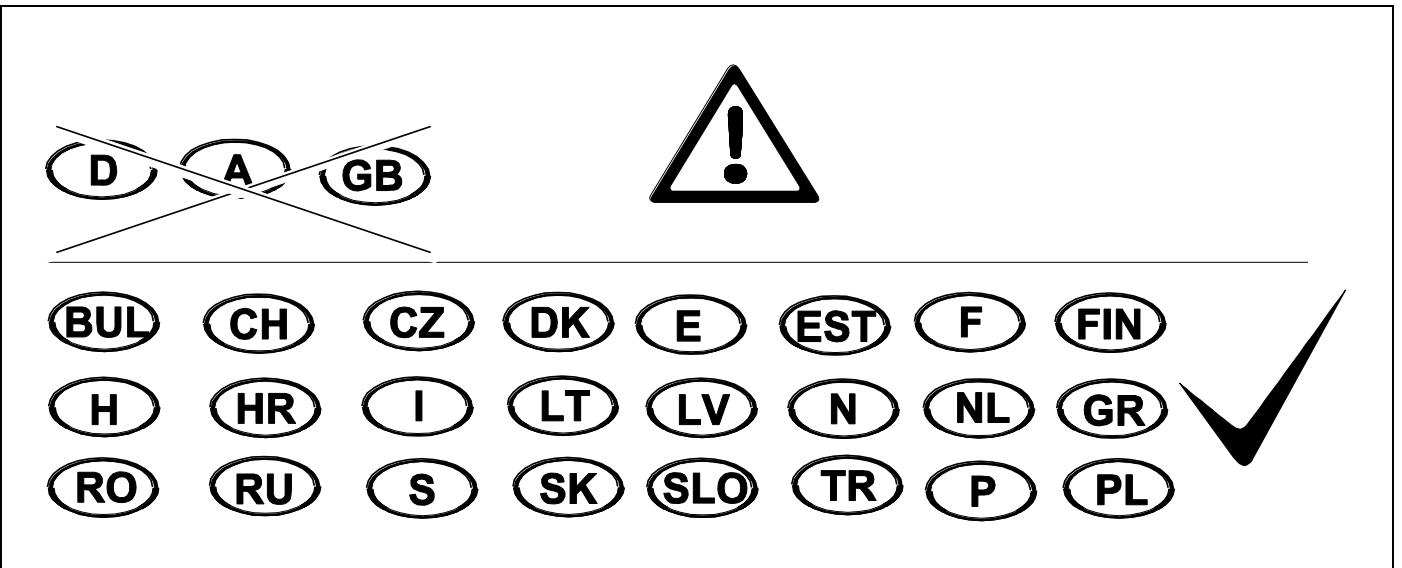
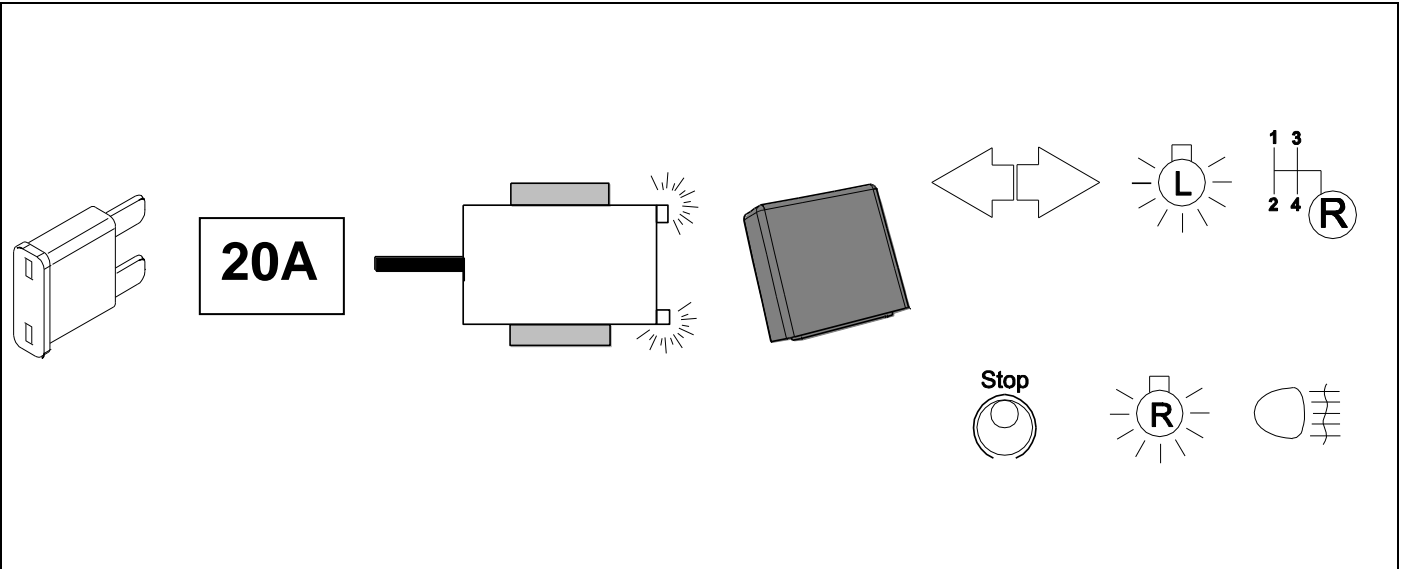
			Bestellnummer: Order number:	<b>SMP-4P-EXT</b>
<p>Diagram showing a cable being inserted into a car's battery terminal. The terminal is labeled '1' and the cable is labeled 'Q'.</p>			<p>Diagram showing the components of the SMP-4P-EXT extension kit, including several cables with connectors and a small electronic module.</p>	

### 28 CHECK



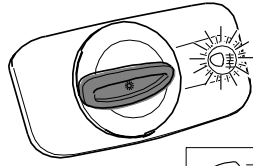







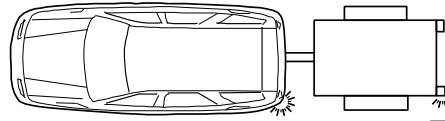
 **ON**


1.



 **ON**

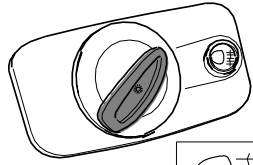
 **ON**



 **ON**

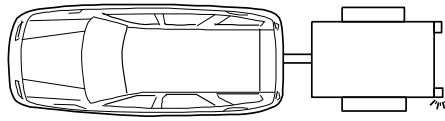
 **ON**

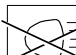
2.

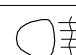


 **ON**

 **OFF**

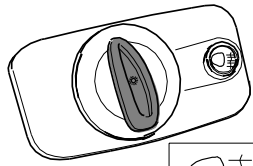


~~~~

 **ON**

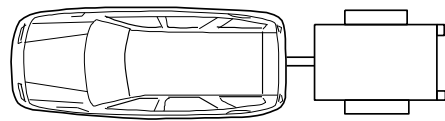
 **OFF**

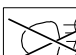
1.

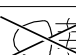


 **OFF**

 **OFF**



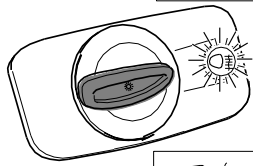
~~~~


~~~~

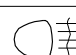
**OPTION 1**

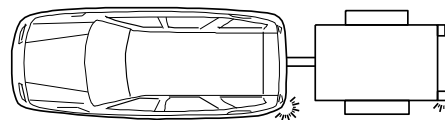
 **OFF**

1.




 **ON**

 **ON**

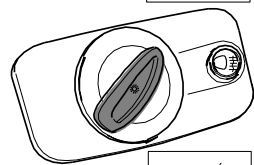


 **ON**

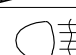
 **ON**

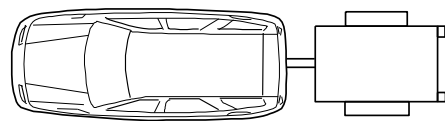
**OPTION 2**


2.

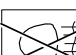


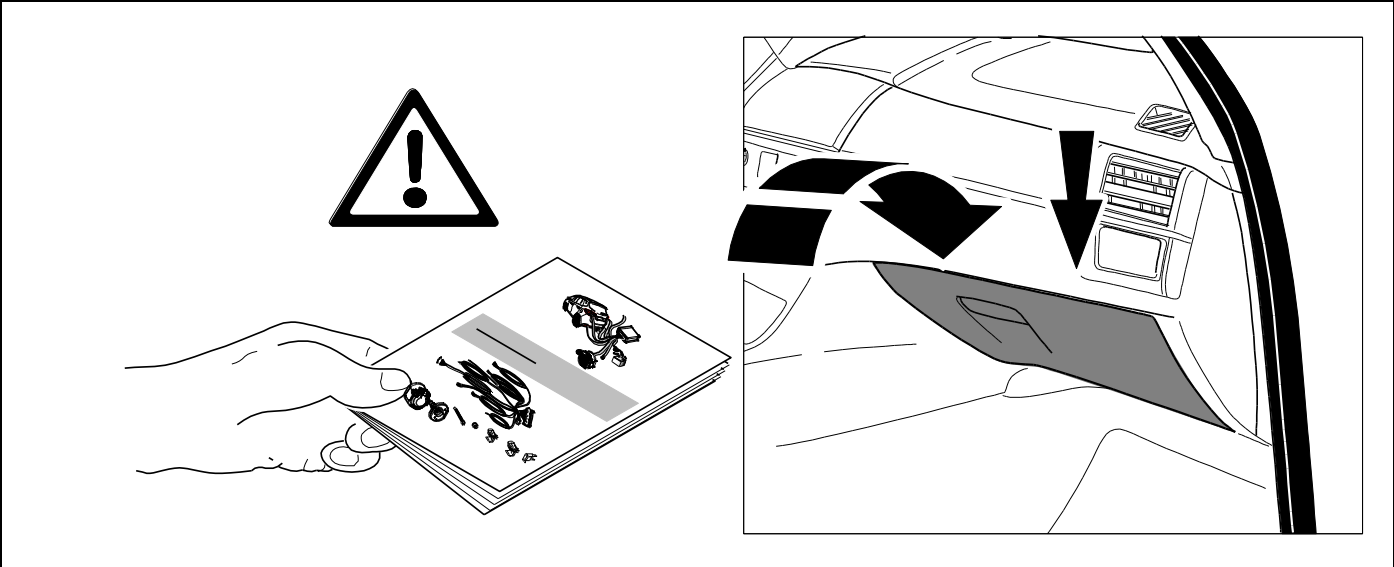
 **ON**

 **OFF**

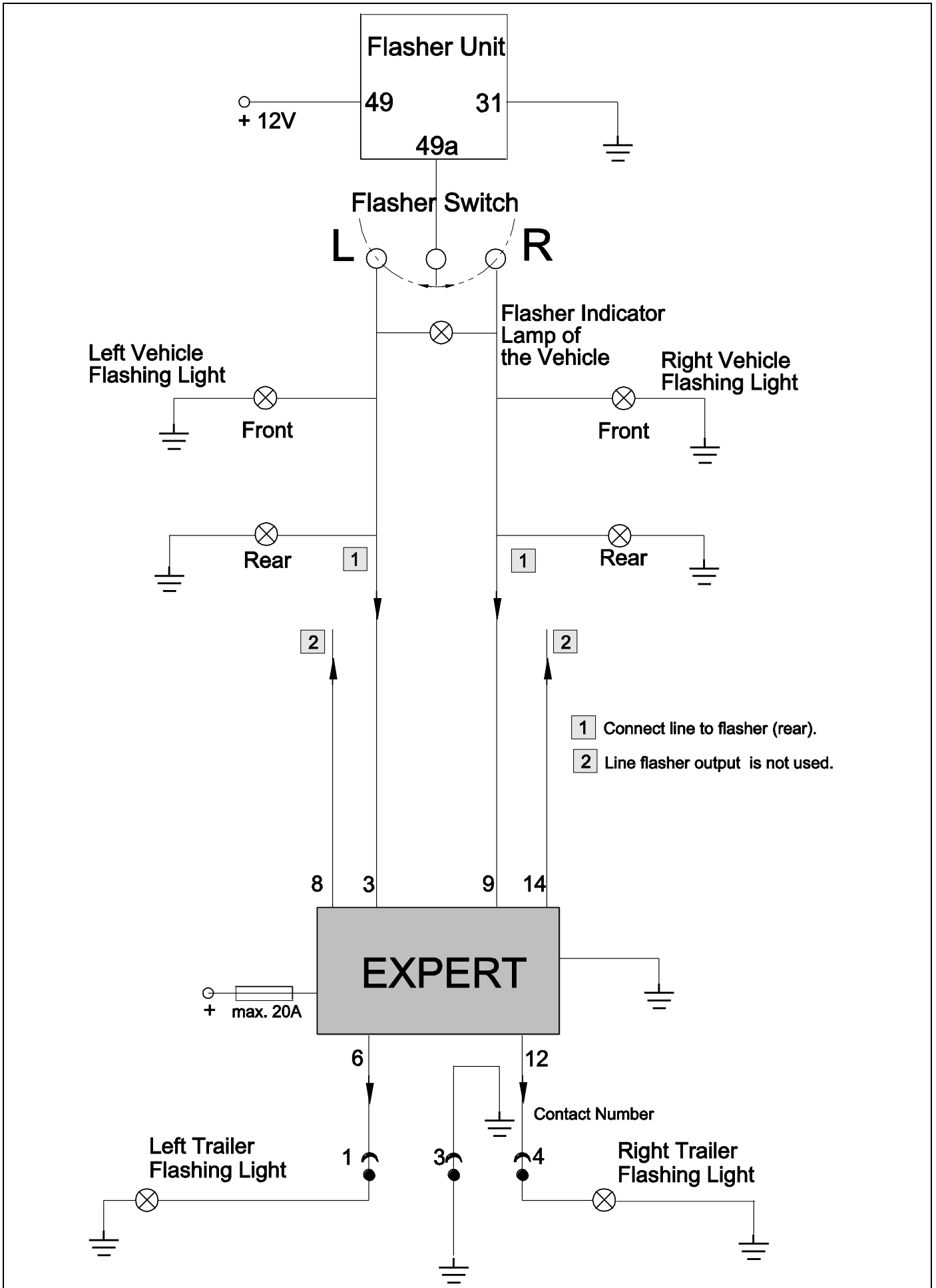


~~~~

~~~~



# EXPERT SCHEMATIC WITHOUT TRAILER FLASHER CONTROL



# EXPERT SCHEMATIC WITH TRAILER FLASHER CONTROL

